

Krystol® Waterstop System

Waterproofing Horizontal & Vertical Construction Joints for Shotcrete - External Grout Method

DESCRIPTION

The Krystol Waterstop System is used to permanently waterproof concrete construction joints. It is installed in place of other less reliable joint systems and allows for flexible scheduling and easy inspection. The Krystol Waterstop System uses Krystol crystalline technology which reacts with water and un-hydrated cement particles to grow insoluble needle-shaped crystals that fill capillaries, micro cracks and pores of concrete to reduce permeability and stop water.

The following application instructions are used to waterproof horizontal and vertical construction joints found in Shotcrete applications using the External Grout Method, which is composed of Krystol Waterstop Grout and Krystol Waterstop Treatment.

LIMITATIONS

Krystol Waterstop System is effective for rigid structures only and may not reliably seal joints that experience variable loading or repeated movement. Consult a Kryton representative for project specific recommendations. Use typical cold weather practices if applying in cold climatic conditions. Installation during heavy rain must be avoided.

NOTES

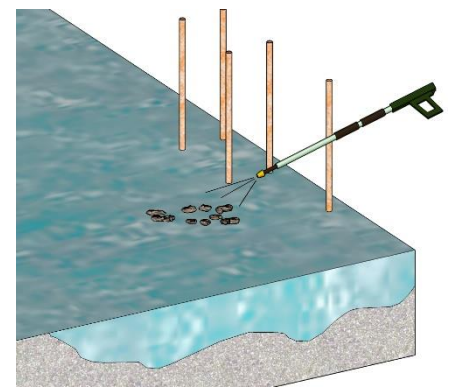
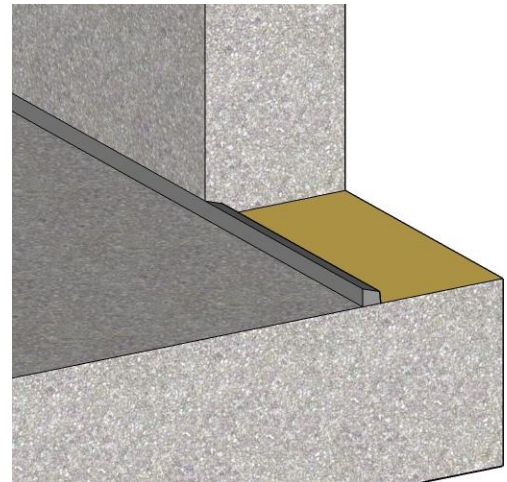
- Application can begin on the day the shotcrete is placed (while it is still green) or after the first layer of shotcrete has hardened. Both procedures are described in this document; schedule shotcrete placement and waterstop installation accordingly.
- For unintended cold joints caused by rapidly setting shotcrete during a scheduled shift, refer to the modified procedure in Application Instruction 4.22 — Waterproofing Unintended Cold Joints (Shotcrete).
- For slab-to-wall intersections, follow Application Instruction 4.11 — Waterproofing Horizontal Construction Joints (Internal Grout Method).

SAFETY PRECAUTIONS

Read and follow the Safety Data Sheets (SDS) for these products (available at www.Kryton.com). For professional use only. These products become highly caustic when mixed with water or perspiration. Avoid contact with skin or eyes. Avoid breathing dust. Wear long sleeves, safety goggles and impervious gloves.

STEP 1: SURFACE PREPARATION

1. Concrete / Shotcrete surfaces to receive the Krystol Waterstop System must be sound, clean and free of dirt, oil, and other elements which may interfere with bonding. Use a chipping hammer or scabbler to remove loose aggregate and level rough or uneven joints.
TIP: Removing loose or protruding concrete and aggregate, and cleaning debris or overspray while concrete / shotcrete is in a plastic state will minimize need to do after it is in a hardened state.



APPLICATION INSTRUCTIONS 4.21

Waterproofing Horizontal & Vertical Construction Joints for Shotcrete - External Grout Method

2. Prepare joints by high-pressure water blasting to remove any form oils, curing compounds, dust or other contaminants. The top most surface of cement paste should be removed; some exposed aggregate is ideal.
3. Surfaces to receive the Krystol Waterstop System must be brought to a saturated, surface-dry (SSD) condition. This means that the pores of the concrete are completely saturated with water but no free water remains at the surface. Thoroughly pre-soak the surface with water then remove excess water with a sponge immediately before application.

TIP: High pressure water blasting is effective at cleaning and saturating the joint in one step.

STEP 2: INSTALL KRYSTOL WATERSTOP TREATMENT

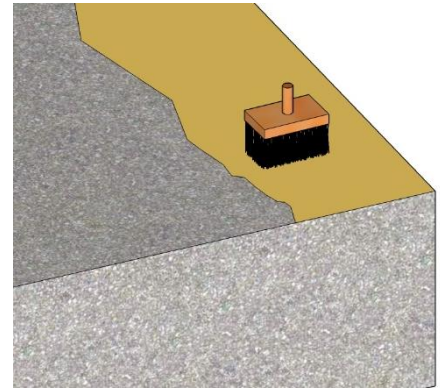
1. Bring concrete to a saturated surface-dry (SSD) condition. This means that the pores of the concrete are completely saturated with water but no free water remains at the surface. Thoroughly pre-soak the surface with water; then remove excess water with a sponge just before applying Krystol Waterstop Treatment.
2. Mix Krystol Waterstop Treatment to a thick but free flowing paste (approximately 3 parts powder to 1 part clean water by volume). The paste will seem thick at first, but will become thinner with mixing. Mix only as much material as can be placed in 30 minutes.

NOTE: Material left standing will quickly stiffen, but mixing will restore plasticity. Do not add water to the material once it has started to set. Over-watering will result in shrinkage cracking.

3. Coat the entire surface area of the joint with Krystol Waterstop Treatment using a concrete brush at a spread rate of 1 kg/m² (0.2 lb./sq. ft.), which will be at least 1 mm (40 mil). Employ a circular, scrubbing motion to achieve maximum penetration and adhesion. Do not allow Krystol Waterstop Treatment to build up on nearby reinforcement.
4. Protect the Krystol Waterstop Treatment application from damage by rain, rapid drying or freezing for 24 hours or until concrete / shotcrete is placed over it. Typical hardening time of Krystol Waterstop Treatment is 2.5 hours at 20°C.

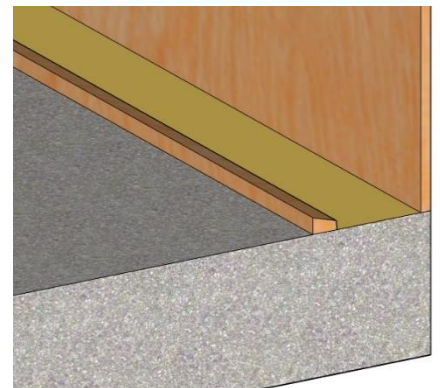
NOTE: For shotcrete placed the same day, the subsequent layer of shotcrete must be placed while the Krystol Waterstop Treatment is still plastic (within 60 minutes under most conditions).

IMPORTANT: Krystol products must be protected from rapid drying and kept damp to develop their full properties. Cover the Krystol Waterstop Treatment with plastic sheeting or damp burlap to contain moisture. After the treatment has hardened, mist the surface with water to maintain moisture levels for 24 hours. Do not use curing compounds.



STEP 3: CREATE A KEYWAY

1. Create a keyway at the intersection where the two shotcrete sections will meet. A suitable keyway can be formed from a dressed 2x2 by trimming one edge off at an angle to leave a narrow edge of about 1.25 in. (40 mm x 40 mm tapering to 30 mm).
2. Install the keyway by one of the following methods:
 - Pressing it into the semi-plastic shotcrete, or
 - Tacking on a form before the subsequent layer of shotcrete is placed and removing the form to produce the keyway, or
 - Using a trowel while the shotcrete is still semi-plastic to dig out a keyway of the proper dimensions.



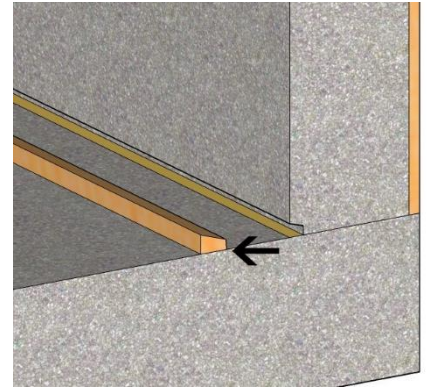
APPLICATION INSTRUCTIONS 4.21

Waterproofing Horizontal & Vertical Construction Joints for Shotcrete - External Grout Method

STEP 4: PREPARE THE KEYWAY

1. Remove keyway forms from the set concrete or shotcrete. Take special care to ensure that no wood is left in the keyway.
2. Ensure keyway is clean and free of dirt, oil, and other elements which may interfere with bonding. Joints should be prepared by high-pressure water blasting to remove any form oils, curing compounds, dust or other contaminants.
3. Surfaces to receive the Krystol Waterstop Grout must be brought to a saturated, surface-dry (SSD) condition. This means that the pores of the concrete are completely saturated with water but no free water remains at the surface. Thoroughly pre-soak the surface with water then remove excess water with a sponge immediately before application.

TIP: High pressure water blasting is effective at cleaning and saturating the joint in one step.



STEP 5: INSTALL KRYSTOL WATERSTOP GROUT™

Only proceed if the keyway is NOT leaking water. If water is leaking through the keyway, stop flowing water with Krystol Plug before installing Krystol Waterstop Grout.

1. Krystol Waterstop Grout may be installed at anytime, but for best results wait for concrete / shotcrete drying shrinkage to take place first.
2. Ensure that the concrete keyway is clean. Remove any form release agents, dirt or debris using mechanical abrasion and/or water blasting.
3. Bring concrete keyway to a saturated, surface-dry (SSD) condition. This means that the pores of the concrete are completely saturated with water but no free water remains at the surface. Thoroughly pre-soak the surface with water; then remove excess water with a sponge just before applying Krystol Waterstop Grout.

Mix Krystol Waterstop Grout to a stiff putty consistency. Start by mixing 3.5 parts powder with 1 part clean water by volume until smooth. Add an additional part of powder (for a total of approximately 4.5 to 1) and continue mixing to obtain a sag free paste. The mixture will appear dry at first, but with mixing will become smooth and workable.

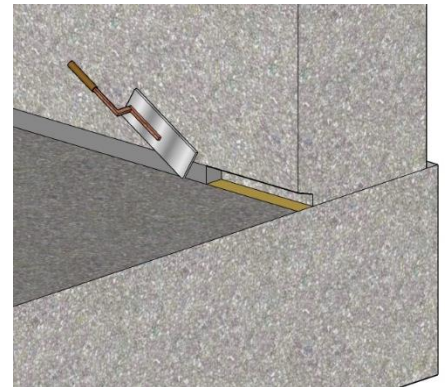
4. Mix only as much material as can be placed in 30 minutes.

NOTE: Material left standing will quickly stiffen, but mixing will restore plasticity. Do not add water to the material once it has started to set. Over-watering will result in shrinkage cracking.

IMPORTANT: Above mix ratio is approximate and intended only as a guide. Conditions may vary affecting the actual powder to water required. Adjust the powder and water content accordingly in order to obtain a consistency that is plastic, sag free and stiff enough to be formed into a ball and hold its shape.

5. Tightly pack the Krystol Waterstop Grout into the keyway so that it is flush with the surface.
6. Protect the Krystol Waterstop Grout application from damage by rain, rapid drying or freezing for at least 24 hours.

IMPORTANT: Krystol products must be protected from rapid drying and kept damp to develop their full properties. Cover the Krystol Waterstop Grout with plastic sheeting or damp burlap to contain moisture. After the grout has hardened, mist the surface with water to maintain moisture levels for 48 hours.



APPLICATION INSTRUCTIONS 4.21

Waterproofing Horizontal & Vertical Construction Joints for Shotcrete - External Grout Method

MATERIALS AND COVERAGE

<u>Material</u>	<u>Coverage</u>
Krystol Waterstop Grout	Approximately 7.5 meters per 25 kg pail (25 feet per 55 lb. pail)
Krystol Waterstop Treatment	Approximately 80 meters per 25 kg pail for a 30 cm wide joint (225 feet per 55 lb. pail for a 12 in. wide joint)

TOOLS

- Clean water supply
- Mixing bucket, drill and mortar paddle
- Natural bristle concrete brush
- Water spray and towel/sponge
- Margin trowel
- High pressure water blaster
- Keyway form
- Chipping Hammer or scabbler